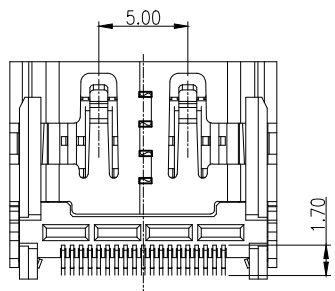
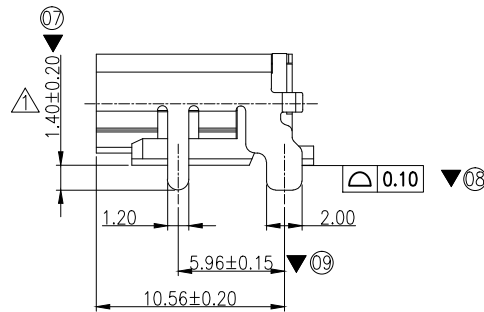
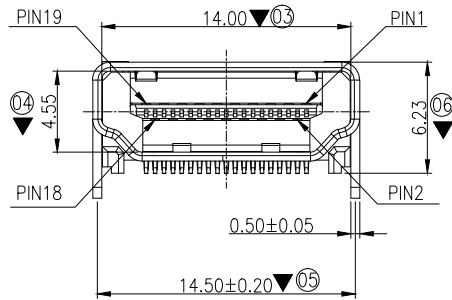
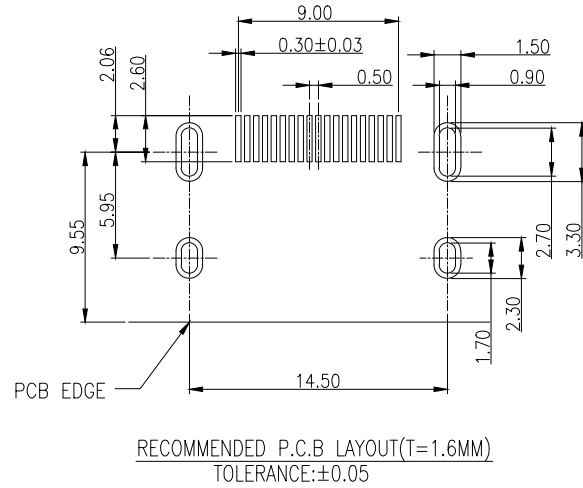
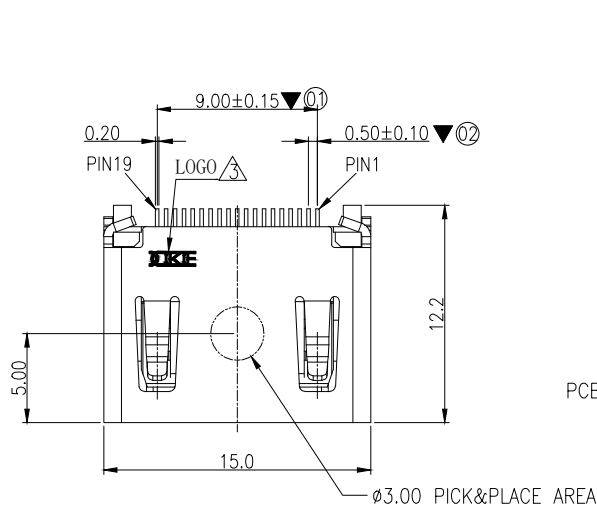
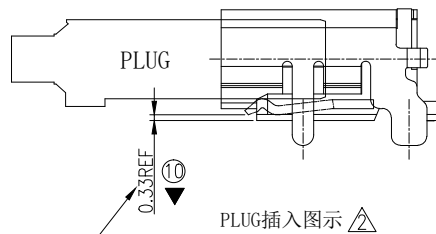


RoHS Compliant



底部弹片与胶芯Standoff的
间隙不可低于0.20mm Min.



REV.	ECN NO	LTR	DESCRIPTION	REVISER	DATE
A/0			Initial release.	Joe.peng	2018.09.08
A/1		▲	外壳DIP=1.95mm改为1.40mm	Joe.peng	2019.03.20
A/2		▲	增加PLUG插入图示	Joe.peng	2020.06.27
A/3	2020082801	▲	变更logo规格以及位置	HCZ	2020.08.28

NOTE:

1.MATERIAL:

- 1.1 INSULATOR:LCP+30%GF, UL94V-0, COLOR:BLACK
- 1.2 CONTACT:BRASS C2680R/H T=0.20MM
- 1.3 SHELL:BRASS C2680R/H T=0.5MM

2. PLATING:

- 2.1 CONTACT: SELECTIVE GOLD PLATED ON CONTACT AREA
100u" Min. MATTE TIN PLATED ON SOLDER TAIL
50u" Min. NICKEL UNDER-PLATED
- 2.2 SHELL:50u" Min. NICKEL PLATED OVERALL

3. CHARACTERISTICS:

- 3.1 ELECTRICAL CHARACTERISTICS;
CONTACT RESISTANCE:30mΩ MAXIMUM
CONTACT CURRENT RATING:0.5A MIN.
DIELECTRIC WITHSTANDING VOLTAGE:500 V R.M.S.
INSULATION RESISTANCE 100 MEGOHMS MIN
APPLIED VOLTAGE RATING: 40V AC
OPERATING TEMPERATURE:-25°C ~ +85°C

3.2 MECHANICAL:

- INSERT FORCE:4.5kgf MAX
WITHDRAWL FORCE:0.80Kg~4.00kgf
DURABILITY TEST: 10000 CYCLES.

4. DESIGN STANDARD ACCORDING TO HDMI A TYPE SPECIFICATION.

5. THE DIMENSIONS WITH"▼"MARK ARE CRITICAL
AND SHOULD BE CONTROLLED BY QC.

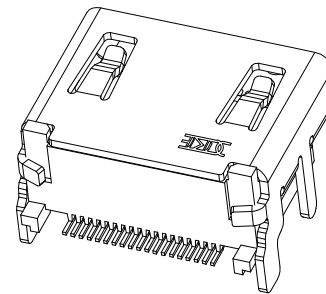
PART NUMBER INFORMATION

30619FK-X-C-J3

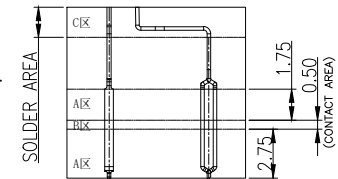
REV

Terminal plating:

- 1: Gold flash
- 3: Gold 5u" on contact area.
- 4: Gold 15u" on contact area.
- 6: Gold 30u" on contact area.



端子整体镀底50u" min.
A 区镀金: Gold flash
1u" min.
B 区镀金: 5u" min.
C 区镀锡: 100u" min.



图号 (DWG NO)	G-306-S1-89	单位 (UNIT): MM	显赫电子科技有限公司 XianHe Electronic Technology co.,ltd.
类别 (DWG TYPE)	SALES DWG	比例 (SCALE) 1:1	
版次 (REV): A/3	页次 (PAGE): 1/1		TEL:0769-89138899 FAX:0769-89100950
设计 (DESIGN)	Alan zhao	未注公差 TOLERANCE UNSPECIFIED	品名 (ITEM NO) HDMI A type rec 外壳DIP式SMT 90度 无法兰
审核 (CHECKED)		X.X ± 0.38 X.XX ± 0.20 X.XXX ± 0.10 X' ± 5' X.X' ± 2'	
核准 (APPROVED)			料号 (PART NO) Please see P/N information