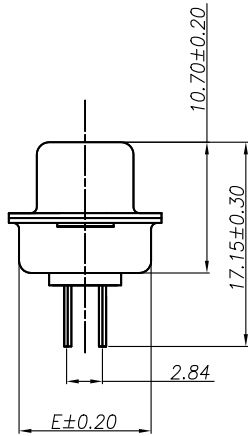
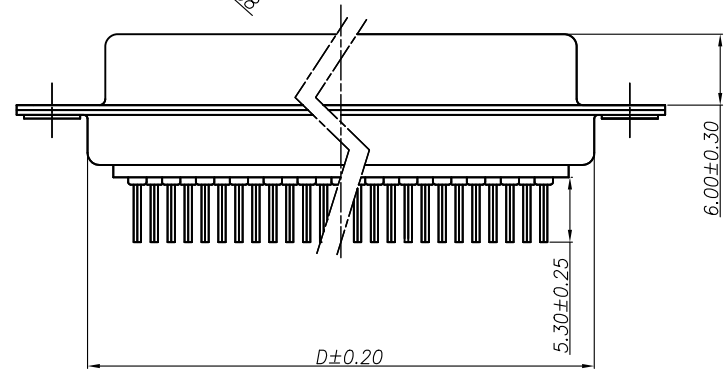
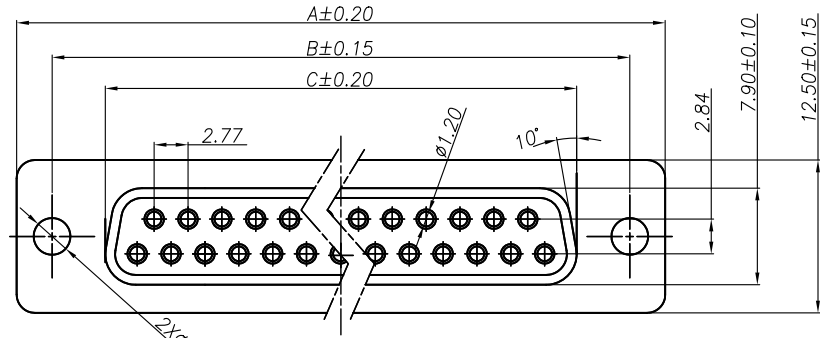


RoHS Compliant

REV.	ECN NO	DESCRIPTION	REVISER	DATE
A/0		Initial release.	Peng	2010.08.24



- Material:
1. Insulator: PBT+30%Glass Fiber (UL94V-0)
  2. Contact: Brass C2680
  3. Contact Plated: gold plated over Nickel
  4. Shell: SPCC-SD
  5. Shell Plated: Cu60u"/Ni100-120u" and Cu60u"/Sn100-120u"

SPECIFICATION:

1. Contact Current Rating: 5AMPS
2. Insulation Resistance: 1000M Ohm MIN. AT 500V DC
3. Dielectric Withstanding Volt: AC 500V/min. R.M.S.
4. Operation Temperature: -55°C ~ +105°C
5. Contact resistance: 20m Ohm Max at 500V DC

How to order

302-XX-F-X-X-X-X

PIN数规格  
09:09Pin  
15:15Pin  
25:25Pin  
37:37Pin

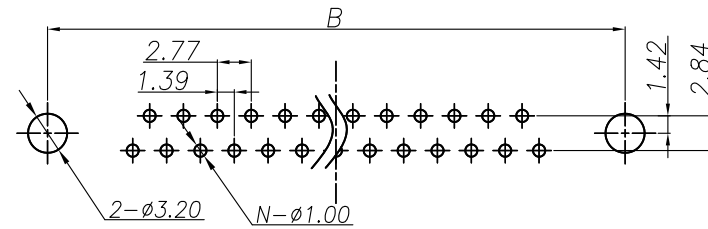
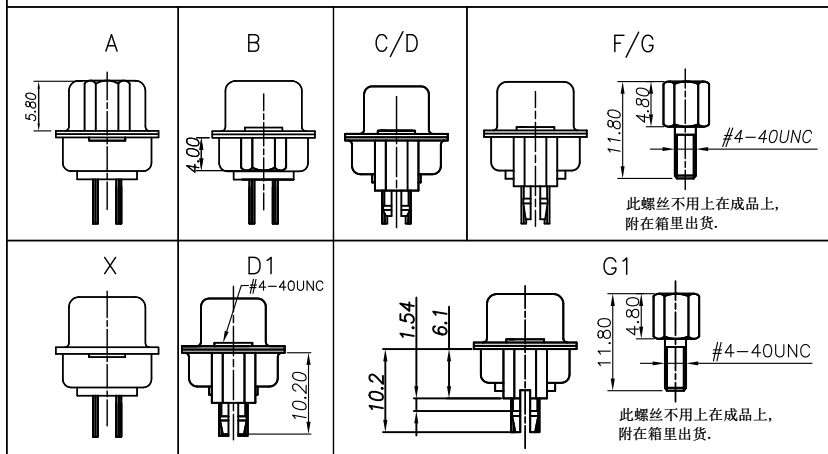
颜色规格  
B: 兰色  
K: 黑色  
W: 白色  
G: 绿色

端子电镀  
1: 半金1u"  
2: 半金3u"  
3: 半金5u"  
4: 半金10u"  
5: 半金15u"  
6: 半金30u"

铁壳电镀  
A: 前镍后锡12H  
B: 前镍后锡24H  
C: 前镍后锡48H  
D: 前镍后锡72H  
E: 前金后锡  
F: 前金后金

铆钉型式  
A: 前铆实心螺母  
B: 后铆空心螺母  
C: 后铆10.7鱼叉  
D: 后铆11.7鱼叉  
F: 后铆11.7鱼叉附螺丝  
G: 后铆11.7鱼叉附螺丝  
X: 无铆钉  
D1: 后铆11.7开口鱼叉  
G1: 后铆11.7开口鱼叉附螺丝  
G2: 后铆11.7mm开口鱼叉锁螺丝(4.75\*5.8mm)

铆钉型式说明



RECOMMENDED PCB LAYOUT  
THICKNESS: 1.6±0.05MM

DIM	PIN	DP9S	DP15S	DP25S	DP37S
A		30.80	39.20	53.05	69.40
B		25.00	33.30	47.05	63.50
C		16.35	24.70	38.40	54.80
D		19.20	27.70	41.10	57.30
E		10.80	10.70	10.70	10.80

图号(DWG NO)	G-302-S1-1	单位(UNIT): MM
类别(DWG TYPE)	SALES DWG	比例(SCALE) 1:1
版次(REV): A/0	页次(PAGE): 1/1	未注公差 TOLERANCE UNSPECIFIED X.X ±0.30 X.XX ±0.20 X.XXX ±0.05 * ±5 X.* ±2
设计(DESIGN)	LJR	
审核(CHECKED)		
核准(APPROVED)		

**显赫电子科技有限公司**  
XianHe Electronic Technology co., Ltd.

TEL: 0769-89138899 FAX: 0769-89100950

品名(ITEM NO)	DP FEMALE DIP TYPE
料号(PART NO)	302-XX-F-X-X-X-X