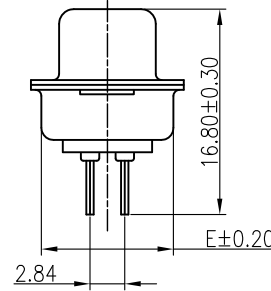
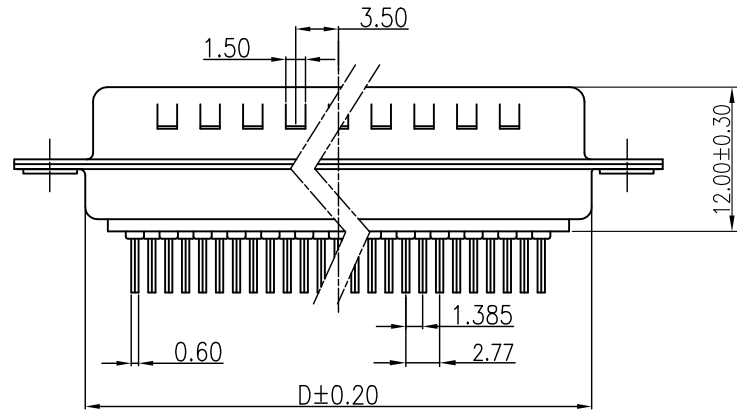
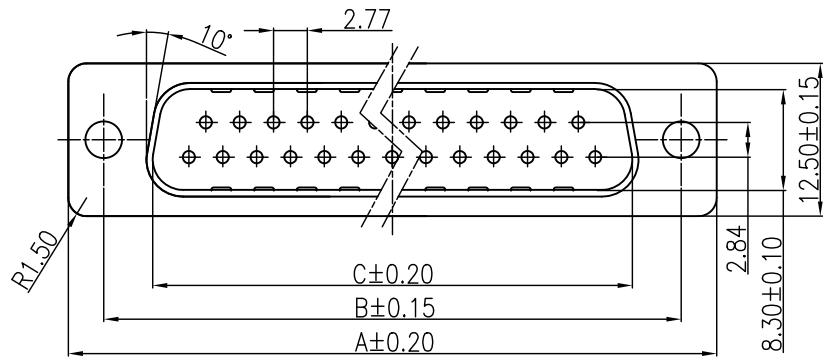


RoHS Compliant

REV.	ECN NO	DESCRIPTION	REVISER	DATE
A/0		图面整理	Peng	2010/08/09



Material:
 1. Insulator: PBT+30% Glass Fiber (UL94V-0)
 2. Contact: Brass C2680
 3. Contact Plated: gold plated over Nickel
 4. Shell: SPCC-SD
 5. Shell Plated: Cu60u"/Ni100-120u" and Cu60u"/Sn100-120u"

SPECIFICATION:
 1. Contact Current Rating: 5AMPS
 2. Insulation Resistance: 1000M Ohm MIN. AT 500V DC
 3. Dielectric Withstanding Volt: AC 500V/min.R.M.S.
 4. Operation Temperature: -55°C ~ +105°C
 5. Contact resistance: 20m Ohm Max at 500V DC

How to order

302-XX-M-X-X-X-X

PIN数规格
 09:09Pin
 15:15Pin
 25:25Pin
 37:37Pin

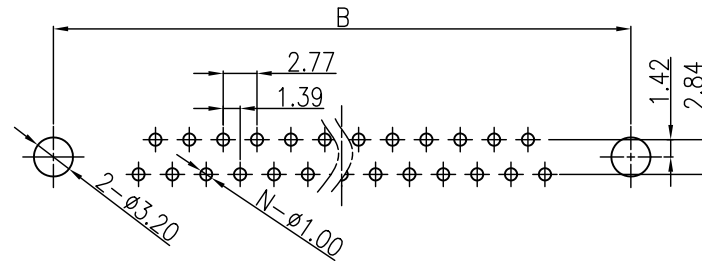
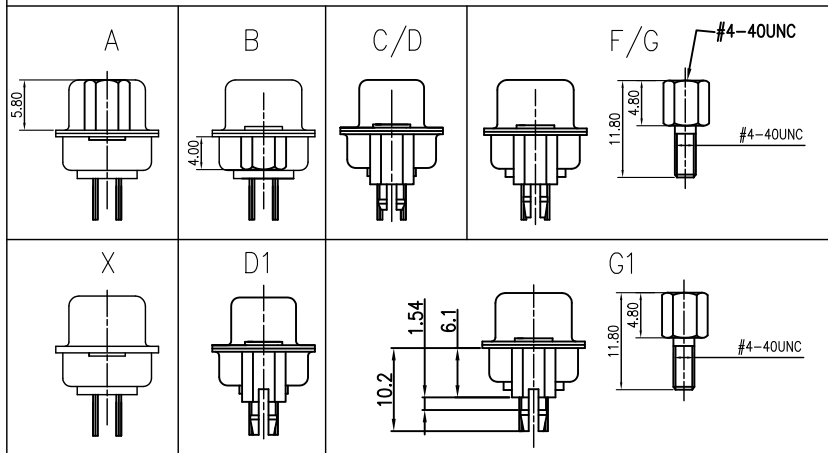
颜色规格
 B: 兰色
 K: 黑色
 W: 白色

铁壳电镀
 A: 前镍后锡12H
 B: 前镍后锡24H
 C: 前镍后锡48H
 D: 前镍后锡72H
 E: 前金后锡

端子电镀
 1: 半金1u"
 2: 半金3u"
 3: 半金5u"
 4: 半金10u"
 5: 半金15u"
 6: 半金30u"

铆钉型式
 A: 前铆空芯螺母(螺母高度5.8mm)
 B: 后铆空芯螺母(螺母高度4.0mm)
 C: 后铆10.7mm鱼叉
 D: 后铆11.7mm鱼叉
 D1: 后铆11.7mm开口鱼叉
 F: 后铆10.7mm鱼叉附螺丝
 F1: 后铆10.7mm鱼叉附螺丝(4.75*5.8*13mm)
 G: 后铆11.7mm鱼叉附螺丝
 G1: 后铆11.7mm开口鱼叉附螺丝
 G2: 后铆11.7mm开口鱼叉锁螺丝(4.75*5.8mm)
 X: 无铆钉

铆钉型式说明



RECOMMENDED PCB LAYOUT THICKNESS: 1.6±0.05MM

DIM	PIN	DP9P	DP15P	DP25P	DP37P
A		30.80	39.20	53.05	69.40
B		25.00	33.30	47.05	63.50
C		16.92	25.25	38.95	55.40
D		19.20	27.70	41.10	57.30
E		10.80	10.70	10.70	10.80

图号(DWG NO)	G-302-S1-7	单位(UNIT): MM
类别(DWG TYPE)	SALES DWG	比例(SCALE) 1:1
版次(REV): A/0	页次(PAGE): 1/1	未注公差 TOLERANCE UNSPECIFIED
设计(DESIGN)	Peng	X.X ±0.30
审核(CHECKED)	Mac	X.XX ±0.20
核准(APPROVED)		X.XXX ±0.05
		X' ±5'
		X.X' ±2'

XIKI 显赫电子科技有限公司
 XianHe Electronic Technology co., Ltd.
 TEL: 0769-89138899 FAX: 0769-89100950

品名(ITEM NO)	DP MALE DIP TYPE
料号(PART NO)	302XXMXXXX