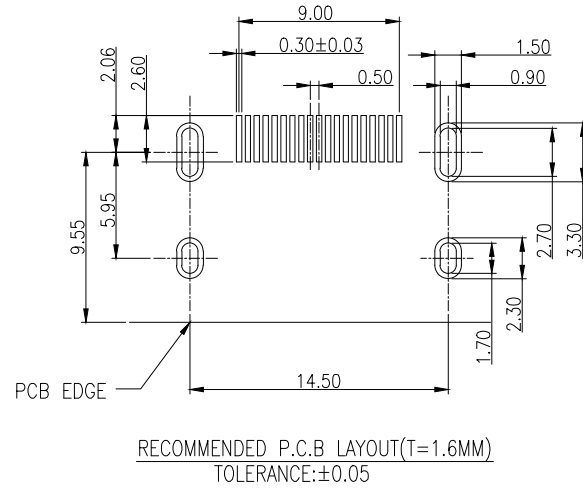
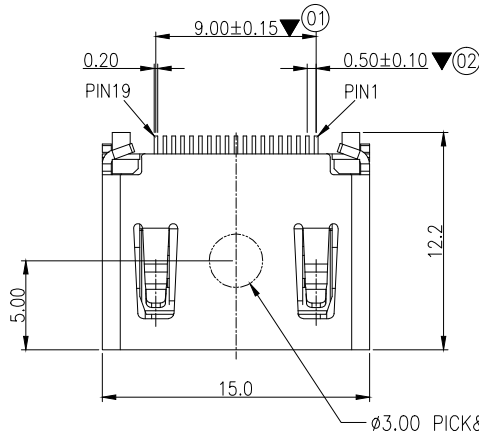
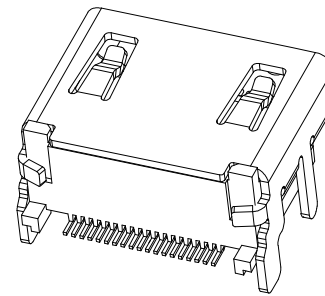
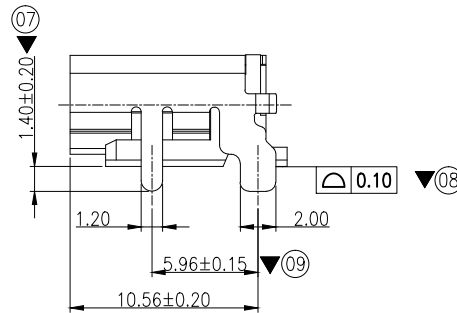
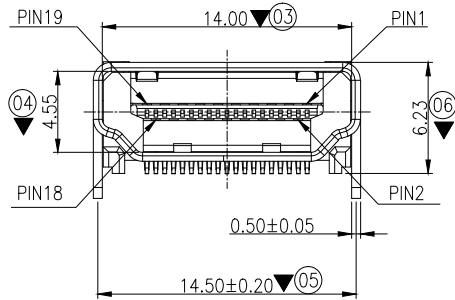


RoHS Compliant

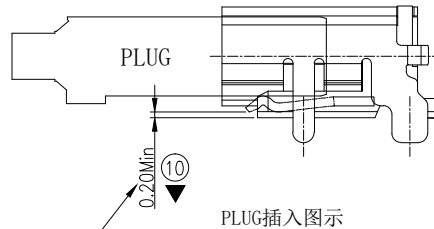
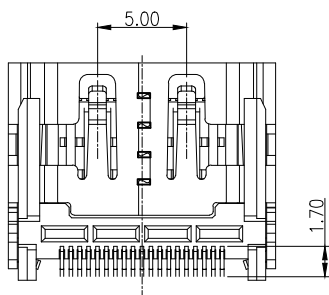
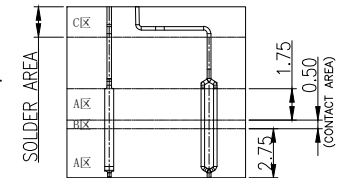
REV.	ECN NO	LTR	DESCRIPTION	REVISER	DATE
A/0			Initial release.	Michael	2020.09.26



- NOTE:
- MATERIAL:
 - INSULATOR:LCP+30%GF, UL94V-0, COLOR:BLACK
 - CONTACT:BRASS C2680R/H T=0.20MM
 - SHELL:BRASS C2680R/H T=0.5MM
 - PLATING:
 - CONTACT:
 - CONTACT AREA: Au1u"Min;
 - SOLDER TAIL: 100u" Min. MATTE TIN;
 - UNDER-PLATED: 50u" Min. NICKEL .
 - SHELL:50u" Min. NICKEL PLATED OVERALL
 - CHARACTERISTICS:
 - ELECTRICAL CHARACTERISTICS;
 - CONTACT RESISTANCE:30mΩ MAXIMUM
 - CONTACT CURRENT RATING:0.5A MIN.
 - DIELECTRIC WITHSTANDING VOLTAGE:500 V R.M.S.
 - INSULATION RESISTANCE 100 MEGOHMS MIN
 - APPLIED VOLTAGE RATING: 40V AC
 - OPERATING TEMPERATURE:-25°C ~ +85°C
 - MECHANICAL:
 - INSERT FORCE:4.5kgf MAX
 - WITHDRAWL FORCE:1.0Kg~4.0kgf
 - DURABILITY TEST: 10000 CYCLES.
 - DESIGN STANDARD ACCORDING TO HDMI A TYPE SPECIFICATION.
 - THE DIMENSIONS WITH"▼"MARK ARE CRITICAL AND SHOULD BE CONTROLLED BY QC.



端子整体镀镍底50u" min.
 A 区镀金: Gold flash
 B 区镀金: 1u" min.
 C 区镀锡: 100u" min.



底部弹片与胶芯Standoff的
 间隙不可低于0.20mm Min.

PLUG插入图示

图号 (DWG NO)	G-306-S1-516	单位 (UNIT): MM	显赫电子科技有限公司 XianHe Electronic Technology co., Ltd.
类别 (DWG TYPE)	SALES DWG	比例 (SCALE) 1:1	
版次 (REV): A/0	页次 (PAGE): 1/1	未注公差 TOLERANCE UNSPECIFIED	TEL:0769-89138899 FAX:0769-89100950
设计 (DESIGN)	Michael	X.X ± 0.38	品名 (ITEM NO) HDMI A type rec 外壳DIP式SMT 90度 无法兰 无LOGO
审核 (CHECKED)		X.XX ± 0.20	
核准 (APPROVED)		X.XXX ± 0.10	料号 (PART NO) 30619FKACN4
		X' ± 5'	
		X.X' ± 2'	