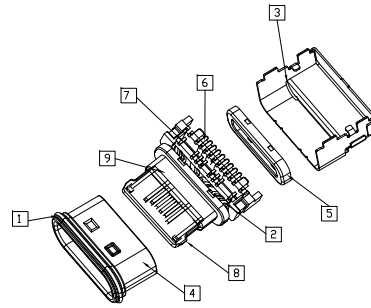
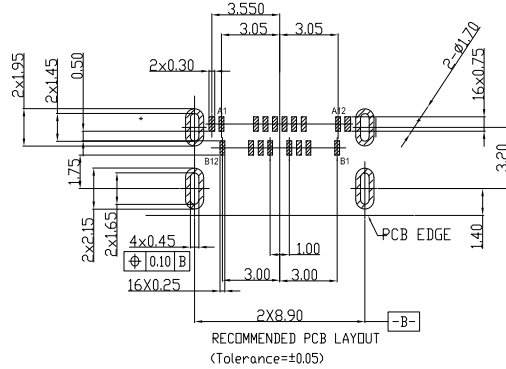
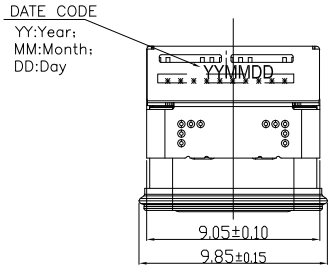


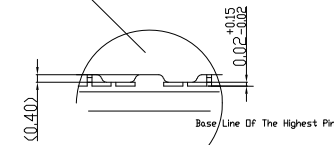
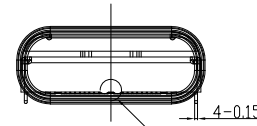
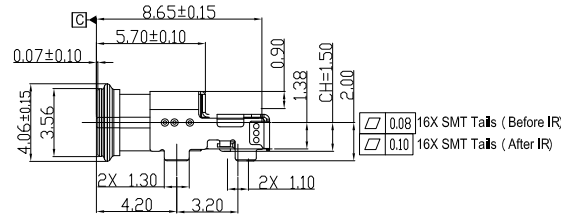
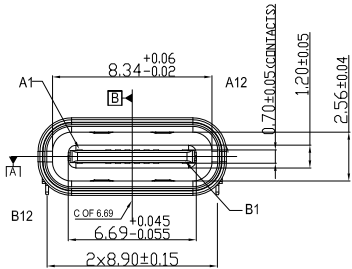
RoHS Compliant

REV.	ECN NO	LTR	DESCRIPTION	REVISER	DATE
A/0			Initial_release.	lina	2023.06.27

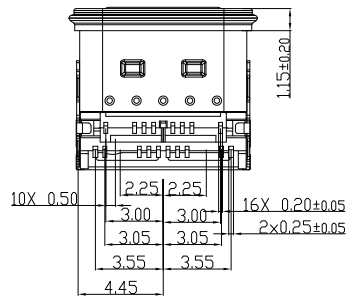
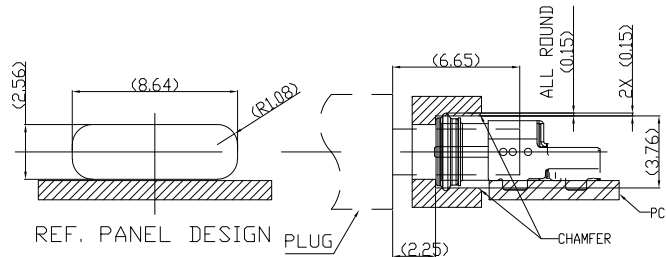


NOTES/注释:

- MATERIAL/材料: SEE TABLE/见下表
- GENERAL SPECIFICATION/通用特性:
  - COPLANARITY /共面度: 0.10 Max.
  - CURRENT RATING: 5A / 额定电流: 5安培
  - CONTACT RESISTANCE: 40mΩ MAX (INITIAL).  
INSULATION RESISTANCE: 100MΩ Min  
接触电阻: 40毫欧最大(初始值) / 绝缘电阻: 100MΩ Min
  - DIELECTRIC WITHSTANDING VOLTAGE: 100 VAC  
耐电压: 100伏交流
  - MECHANICAL CHARACTERISTICS:  
INSERTION FORCE: 5~20N EXTRACTION FORCE: 8~20N  
AFTER DURABILITY EXTRACTION FORCE: 6~20N  
力学特性: 初始插入力: 5~20N 拔出力: 8~20N  
耐久后拔出力: 6~20N
  - DURABILITY: 10000 CYCLES / 耐久性: 10000次
- WATERPROOF CLASS IPX8/防水等级 IPX8



Detail H (Scale : 5:1)



Pin No	Signal Name	Mating Sequence	Pin No	Signal Name	Mating Sequence
A1	Vbus	First	B9	Vbus	First
A4	CC1	Second	B8	SBU2	Second
A5	D+	Second	B7	D-	Second
A6	D-	Second	B6	D+	Second
A7	SBU1	Second	B5	CC2	Second
A8	Vbus	First	B4	Vbus	First
A9	GND	First	B1	GND	First
A12					
	SHELL	GND		SHELL	GND

1	密封圈	1PCS	硅胶, 黑色
2	胶水	1PCS	环氧胶, 黑色
3	外壳	1PCS	SUS304 1/2H, T=0.15. 镀镍50u" MIN.
4	内拉伸壳	1PCS	SUS316, T=0.20. 清洗
5	EMI拉伸壳	1PCS	SUS304 1/4H, T=0.12. 镀镍50u" MIN.
6	上排端子	1SET	C18400, T=0.12. 底层镀镍 50u"Min, 功能接触区单面刷 镀金足1U", 焊接区双面镀金 G/F.
7	下排端子	1SET	镀金足1U", 焊接区双面镀金 G/F.
8	中板	1PCS	SUS301, H T=0.15, 镀镍50u" MIN.
9	塑胶	1PCS	PA46 BLACK
NO	部件名称	数量	材质说明

图号 (DWG NO)	G-319-S1-716	单位 (UNIT):	MM
类别 (DWG TYPE)	BRKE DWG	比例 (SCALE):	1:1
版次 (REV):	A/0	页次 (PAGE):	1/1
设计 (DESIGN)	lina	未注公差 TOLERANCE UNSPECIFIED	X.X ± 0.38 X.XX ± 0.20 X.XXX ± 0.10 X' ± 5' X.X' ± 2'
审核 (CHECKED)		品名 (ITEM NO)	
核准 (APPROVED)		料号 (PART NO)	319CFKK9ASN

**显赫电子科技有限公司**  
XianHe Electronic Technology co., ltd.

TEL:0769-89138899 FAX:0769-89100950

品名 (ITEM NO): USB C TYPE 3.1 母座 双排 SMT 16PIN L=8.65mm 防水等级 IP68 PA46黑色, 接触区镀金足1U" 焊脚区镀金G/F 不锈钢外壳镀镍 载带包装 环保

料号 (PART NO): 319CFKK9ASN