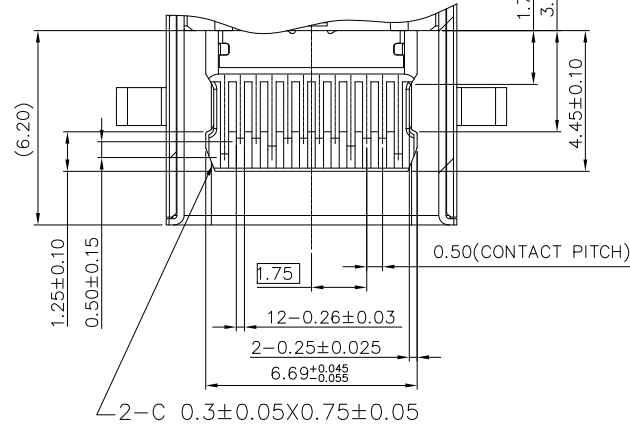
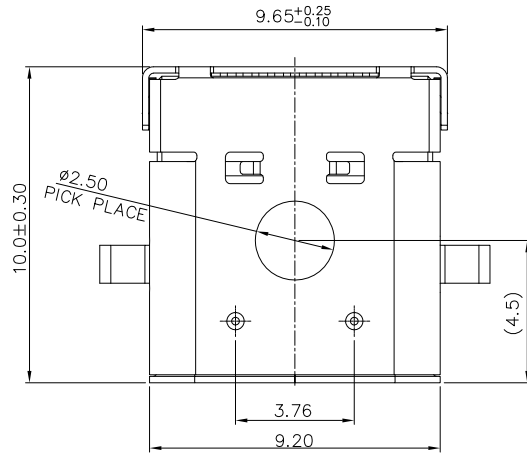
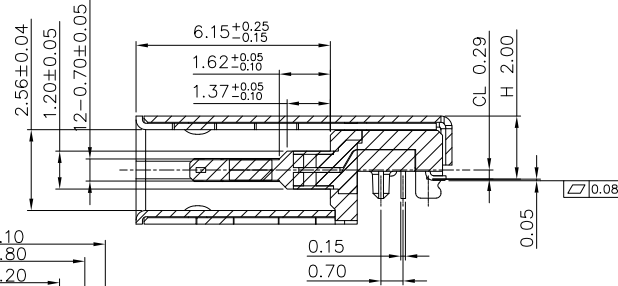
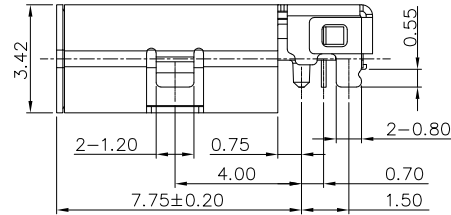
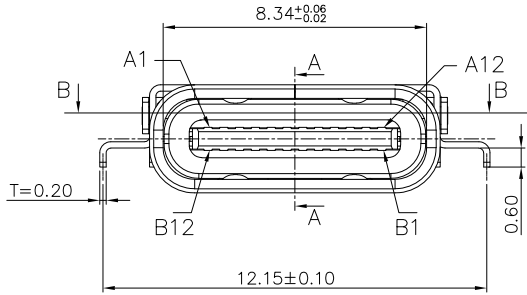


RoHS Compliant

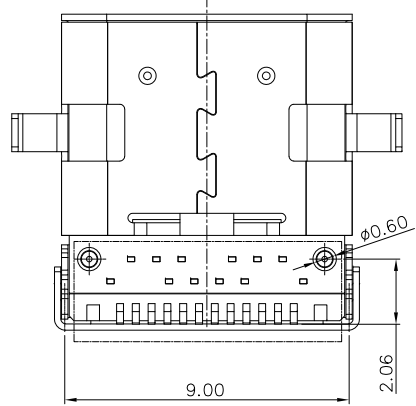
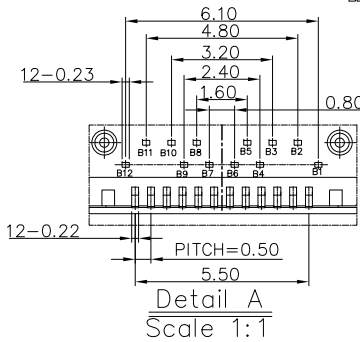
| REV. | ECN NO | LTR | DESCRIPTION | REVISER | DATE |
|------|--------|-----|------------------|---------|------------|
| A/0 | | | Initial_release. | Lina | 2023.06.16 |



SECTION B-B
Scale 1:1



Section A-A
Scale 1:1



NOTE:
 1. MATERIAL:
 1.1 INSULATOR: MOLDING, UL94V-0, COLOR: BLACK
 1.2 CONTACT: COPPER ALLOY,
 1.3 SUS304-H, T=0.30±0.03mm
 1.4 EMI SHILD: SUS304-H, T=0.12±0.03mm
 1.5 LATCH: SUS301-H, T=0.15±0.03mm
 2. PLATING:
 2.1 CONTACT: GOLD 30u" PLATED ON CONTACT AREA
 80u" Min. MATTE TIN PLATED ON SOLDER TAIL
 50u" Min. NICKEL UNDER-PLATED
 2.2 SHELL: 50u" Min. NICKEL PLATED OVERALL
 3. CHARACTERISTICS:
 3.1 ELECTRICAL CHARACTERISTICS;
 CONTACT RESISTANCE: 40mΩ MAXIMUM
 CURRENT RATING: 5A MAX FOR VBUS,
 1.25A FOR GND, 0.25A FOR OTHER OTHER.
 VOLTAGE: 20VDC MAX
 DIELECTRIC WITHSTANDING VOLTAGE: 100 V R.M.S.
 INSULATION RESISTANCE 100 MEGOHMS MIN
 OPERATING TEMPERATURE: -25°C ~ +85°C
 3.2 MECHANICAL:
 MATING FORCE: 5~20N
 UNMATING FORCE: 8~20N.
 DURABILITY TEST: 10000 CYCLES.

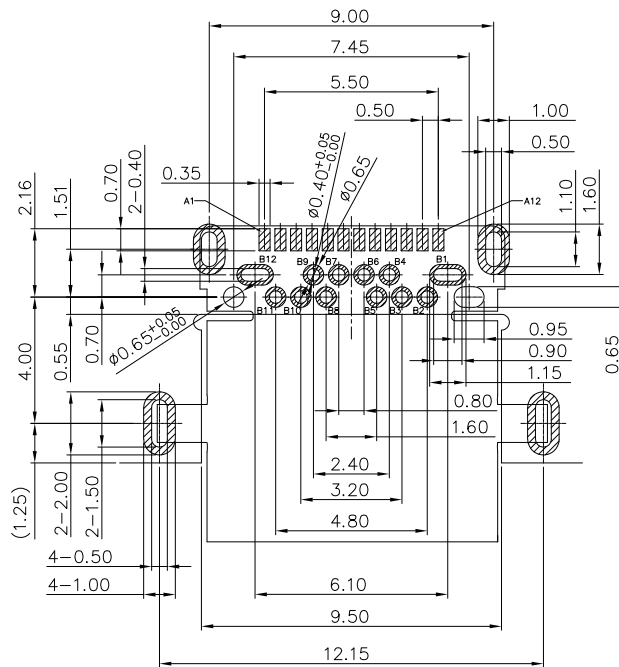
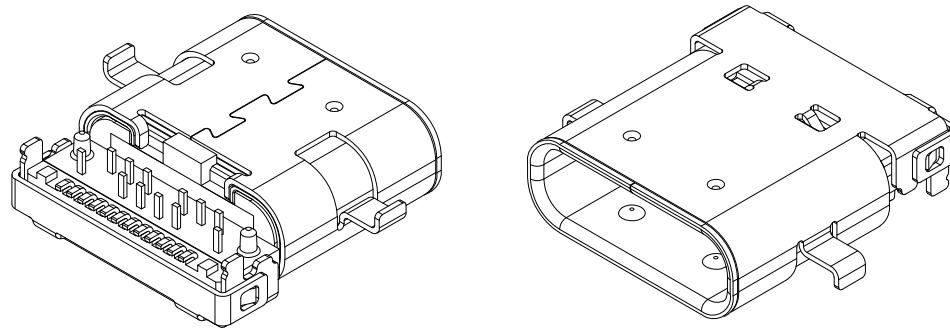
| | | | | |
|---------------|--------------|--------------|-----------------------|---|
| 图号 (DWG NO) | G-319-S1-714 | 单位 (UNIT): | MM | 显赫电子科技有限公司 XianHe Electronic Technology co., Ltd. |
| 类别 (DWG TYPE) | BRKE DWG | 比例 (SCALE): | 1:1 | |
| 版次 (REV): | A/0 | 页次 (PAGE): | 1/2 | TEL:0769-89138899 FAX:0769-89100950 |
| 设计 (DESIGN) | Lina | 未注公差 | TOLERANCE UNSPECIFIED | 品名 (ITEM NO) |
| 审核 (CHECKED) | | X.X ± 0.38 | X.XX ± 0.20 | |
| 核准 (APPROVED) | | X.XXX ± 0.10 | X' ± 5' | 料号 (PART NO) |
| | | X.X' ± 2' | | 319CFKD16SN |

RoHS Compliant

| | | | | | |
|------|--------|-----|------------------|---------|------------|
| REV. | ECN NO | LTR | DESCRIPTION | REVISER | DATE |
| A/0 | | | Initial_release. | lina | 2023.06.16 |

USB TYPE-C FULL-FEATURED RECEPTACLE INTERFACE PIN ASSIGNMENTS

| PIN | Signal Name | Description | PIN | Signal Name | Description |
|-----|-------------|---|-----|-------------|---|
| A1 | GND | Ground return | B12 | GND | Ground return |
| A2 | SSTXp1 | Positive half of first SuperSpeed TX differential pair | B11 | SSRXp1 | Positive half of first SuperSpeed RX differential pair |
| A3 | SSTXn1 | Negative half of first SuperSpeed TX differential pair | B10 | SSRXn1 | Negative half of first SuperSpeed RX differential pair |
| A4 | VBUS | Bus Power | B9 | VBUS | Bus Power |
| A5 | CC1 | Configuration Channel | B8 | SBU2 | Sideband Use (SBU) |
| A6 | Dp1 | Positive half of the USB 2.0 differential pair-Position 1 | B7 | Dn2 | Negative half of the USB 2.0 differential pair-Position 2 |
| A7 | Dn1 | Negative half of the USB 2.0 differential pair-Position 1 | B6 | Dp2 | Positive half of the USB 2.0 differential pair-Position 2 |
| A8 | SBU1 | Sideband Use(SBU) | B5 | CC2 | Configuraation Channel |
| A9 | VBUS | Bus Power | B4 | VBUS | Bus Power |
| A10 | SSRXn2 | Negative half of second SuperSpeed RX differential pair | B3 | SSTXn2 | Negative half of second SuperSpeed TX differential pair |
| A11 | SSRXp2 | Positive half of second SuperSpeed RX differential pair | B2 | SSTXp2 | Positive half of second SuperSpeed TX differential pair |
| A12 | GND | Ground return | B1 | GND | Ground return |



RECOMMEND P.C.B LAYOUT(COMPONENT SIDE)
TOLERANCE FOR PCB LAYOUT IS ± 0.05

| | | | | | |
|---------------|----------------|---|-------------------------------------|---|-------------|
| 图号 (DWG NO) | G-319-S1-714 | 单位 (UNIT): MM | | 显赫电子科技有限公司 | |
| 类别 (DWG TYPE) | BRKE DWG | 比例 (SCALE) 1:1 | | XianHe Electronic Technology co., ltd. | |
| 版次 (REV): A/0 | 页次 (PAGE): 2/2 | | TEL:0769-89138899 FAX:0769-89100950 | | |
| 设计 (DESIGN) | lina | 未注公差 TOLERANCE UNSPECIFIED | 品名 (ITEM NO) | USB C TYPE REC R/A 双壳沉板式 Hybrid, CL=0.29mm/H=2.0mm DIP TYPE, LCP黑色 半金雾锡30u", 环保 | |
| 审核 (CHECKED) | | X.X ± 0.38 X.XX ± 0.20 X.XXX ± 0.10 X" ± 5" X.X' ± 2" | | 料号 (PART NO) | 319CFKD16SN |
| 核准 (APPROVED) | | | | | |