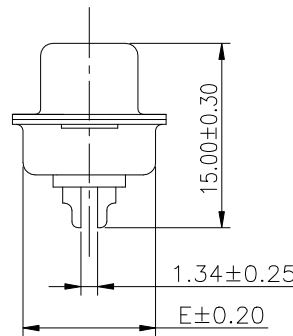
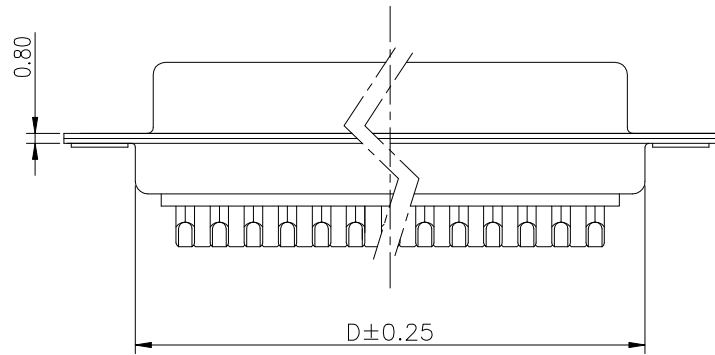
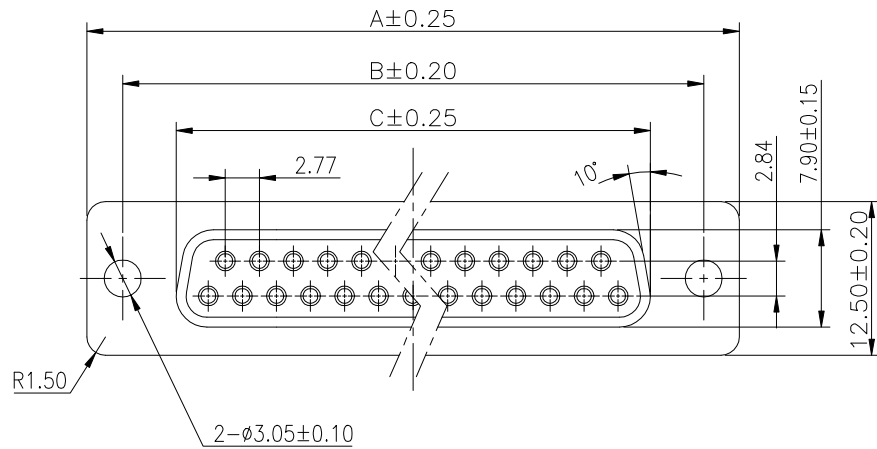


RoHS Compliant



Material:
 1.Insulator:PBT+30 %Glass Fiber (UL94V-0)
 2.Contact:Brass C2680.
 Selective gold plating on contact area.
 80u"Min. tin plating on solder tail.
 50u" Min. nickel plating over base.
 3.Shell:SPCC-SD
 Front shell:80u"Min. nickel plating over 60u"Min.Cu.
 Back shell:80u"Min. tin plating over 60u"Min.Cu.

Electrical Characteristics:
 1.Contact Current Rating:5 AMPS
 2.Insulation Resistance:5000M Ohm MIN.
 3.Contact Resistance:30m Ohm Max.
 4.Dielectric Withstanding Volt:1000V AC Min.
 5.Operation Temperature:-55°C to +105°C

This product doesn't contain environmental hazardous per Directive EU 2015/863
 Fro RoHS compliant.

PART NUMBER INFORMATION

301- XX - F - X - X - 2 - X - X

PIN数规格
 09:09Pin
 15:15Pin
 25:25Pin
 37:37Pin

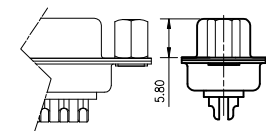
颜色规格
 B:兰色
 K:黑色

端子电镀
 1:半金1u"
 5:半金15u"
 6:半金30u"

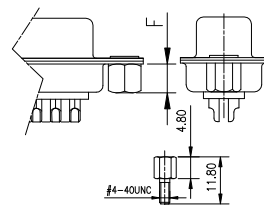
铆钉型式
 A:前铆实芯螺母
 X:铆合无螺丝
 A1:前铆镀金实芯螺母
 B2:后铆4.0空芯螺母
 B3:后铆2.5空芯螺母
 C:前铆空芯螺母
 AB:后铆空芯螺母4.0, 附六角螺丝

铁壳电镀
 A:前镍后锡12H
 B:前镍后锡24H
 C:前镍后锡48H

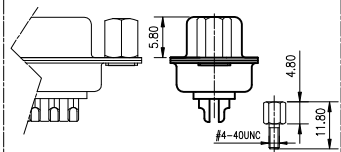
DIM \ PIN	9Pin	15Pin	25Pin	37Pin
A	30.80	39.20	53.05	69.40
B	25.00	33.30	47.05	63.50
C	16.30	24.70	38.40	54.80
D	19.20	27.70	41.10	57.30
E	10.80	10.70	10.70	10.70



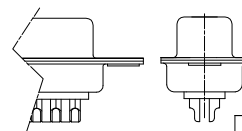
Rivet option:
 Type A:前铆实芯螺母
 Type A1:前铆镀金实芯螺母



Rivet option:
 Type B2:后铆4.0空芯螺母 Dim F=4.0
 Type B3:后铆2.5空芯螺母 Dim F=2.5



Rivet option:
 Type C:前铆空芯螺母 (附螺丝)
 此螺丝不用组装,
 附产品一起出货.



Rivet option:
 Type X: 铆合无螺丝

图号 (DWG NO)	G-301-S1-6	单位 (UNIT):	MM
类别 (DWG TYPE)	BRKE DWG	比例 (SCALE):	1:1
版次 (REV):	A/0	页次 (PAGE):	1/1
设计 (DESIGN)	PENGZJ	未注公差	TOLERANCE UNSPECIFIED
审核 (CHECKED)		.X.X	± 0.38
核准 (APPROVED)		.X.XX	± 0.20
		.X.XXX	± 0.10
		X"	± 5"
		X.X"	± 2"



显赫电子科技有限公司

XianHe Electronic Technology co., ltd.

TEL:0769-89138899 FAX:0769-89100950

品名 (ITEM NO)	DB Female solder type
料号 (PART NO)	Please see P/N information