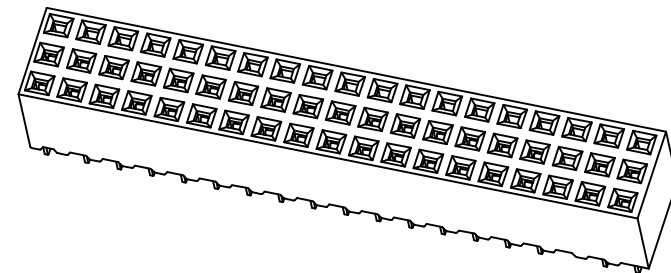
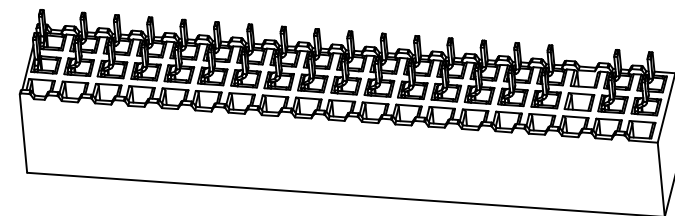
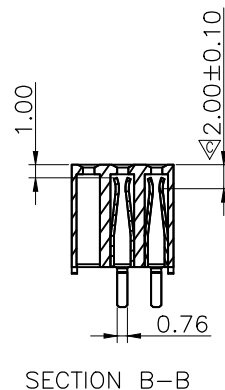
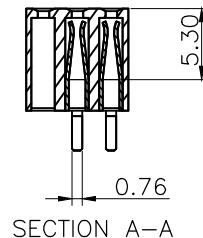
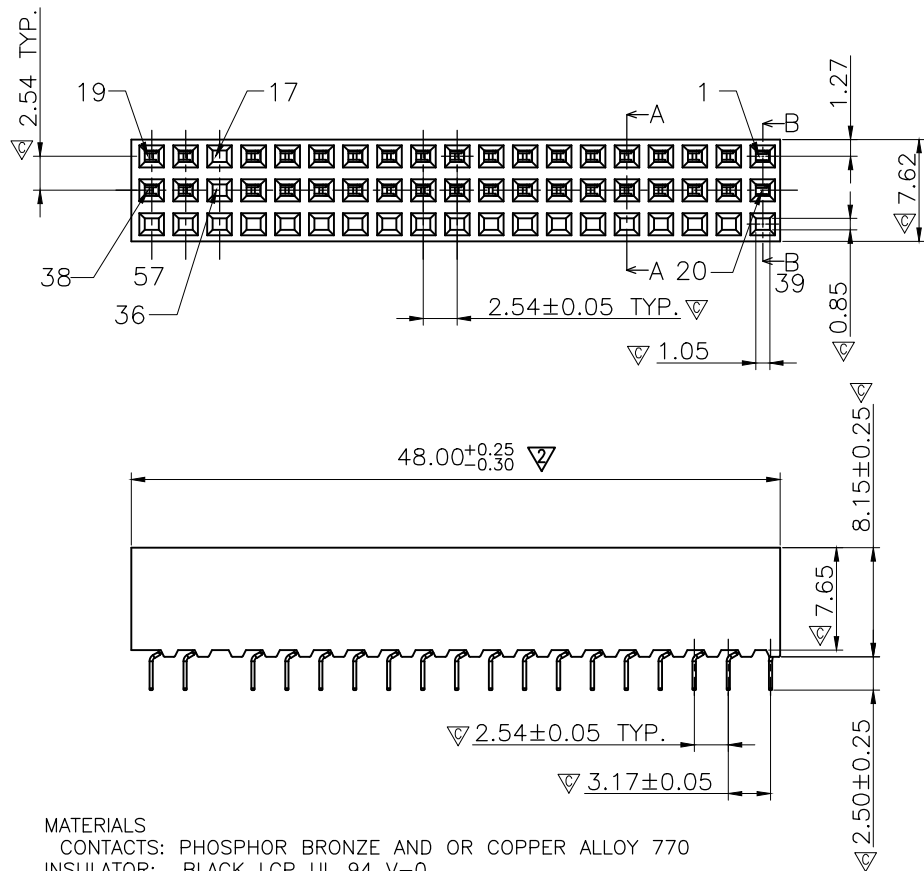
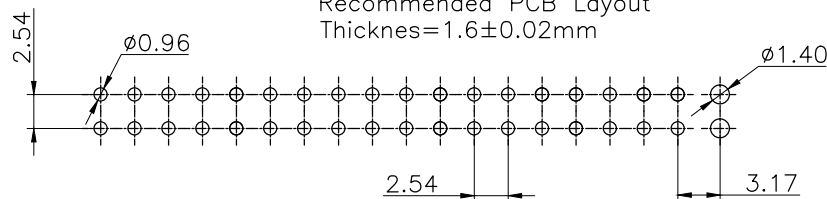


RoHS Compliant


REV.	ECN NO	LTR	DESCRIPTION	REVISER	DATE
0/1			Initial_release.	ZXW	2013/02/18
0/2	2013042401	▽	胶芯整体长度减短0.55mm	ZXW	2013/04/24



Recommended PCB Layout
Thicknes=1.6±0.02mm



MATERIALS
 CONTACTS: PHOSPHOR BRONZE AND OR COPPER ALLOY 770
 INSULATOR: BLACK LCP UL 94 V-0
 PLATING: 30u" GOLD OVER 50u" NICKEL OVERALL 100u" TIN/LEAD ON TAIL
CURRENT RATING EAMPS/CONTACT
OPERATING TEMPERATURE -65c° TO 105c°
CONTACT USE LOW INSERTION STYLE
INSERTION FORCE 2.5+/- .5 OZ WITH .025" SQ PINS
WITHDRAWAL FORCE 1.5+/- .5 OZ WITH .025" SQ PINS
CONTACT RESISTANCE 15 MOHMS MAX
INSERTION DEPTH .100" TO .240"
 EXCEPT FOR PINS 107&108 WHICH ARE PASSTHRU PINS
 MUST PROVIDE 100 MATING CYCLES WITH .025" SQ PINS
 PC TAILS MUST HAVE TAPERED LEAD-INS
 CONNECTOR MUST BE UL LISTED OR RECOGNIZED
 THE CONNECTOR SHALL BE ABLE TO WITHSTAND A VOLTAGE OF 2700 VDC OR 1900 VAC FOR 1 SEC
 PIN TO PIN, IN ACCORDANCE WITH EN 50021 SEC 9.1
 UL 508 SEC 49 AND IEC 1131 TABLE 17
 DIMENSION MARKED ▽ CONTROLLED IN QIP.

图号 (DWG NO)	G-359-S2-3	单位 (UNIT):	MM	 显赫电子科技有限公司 XianHe Electronic Technology co.,ltd.	
类别 (DWG TYPE)	ENG DWG	比例 (SCALE)	1:1		
版次 (REV):	0/2	页次 (PAGE):	1/1	TEL:0769-89138899 FAX:0769-89100950	
设计 (DESIGN)	ZXW	未注公差	TOLERANCE UNSPECIFIED	品名 (ITEM NO)	I/O connector 3*19pin排母 Pitch=2.54mm LCP 半金雾锡30u" (44B714750-005R01) 环保
审核 (CHECKED)		X.X ± 0.30		料号 (PART NO)	359057MK6A2
核准 (APPROVED)		X.XX ± 0.13			
		X.XXX ± 0.05			
		X ± Z			
		X.X' ± 1'			